



# Introduction to Research Ethics

Patrick Goodbourn

*Chair of Human Ethics*

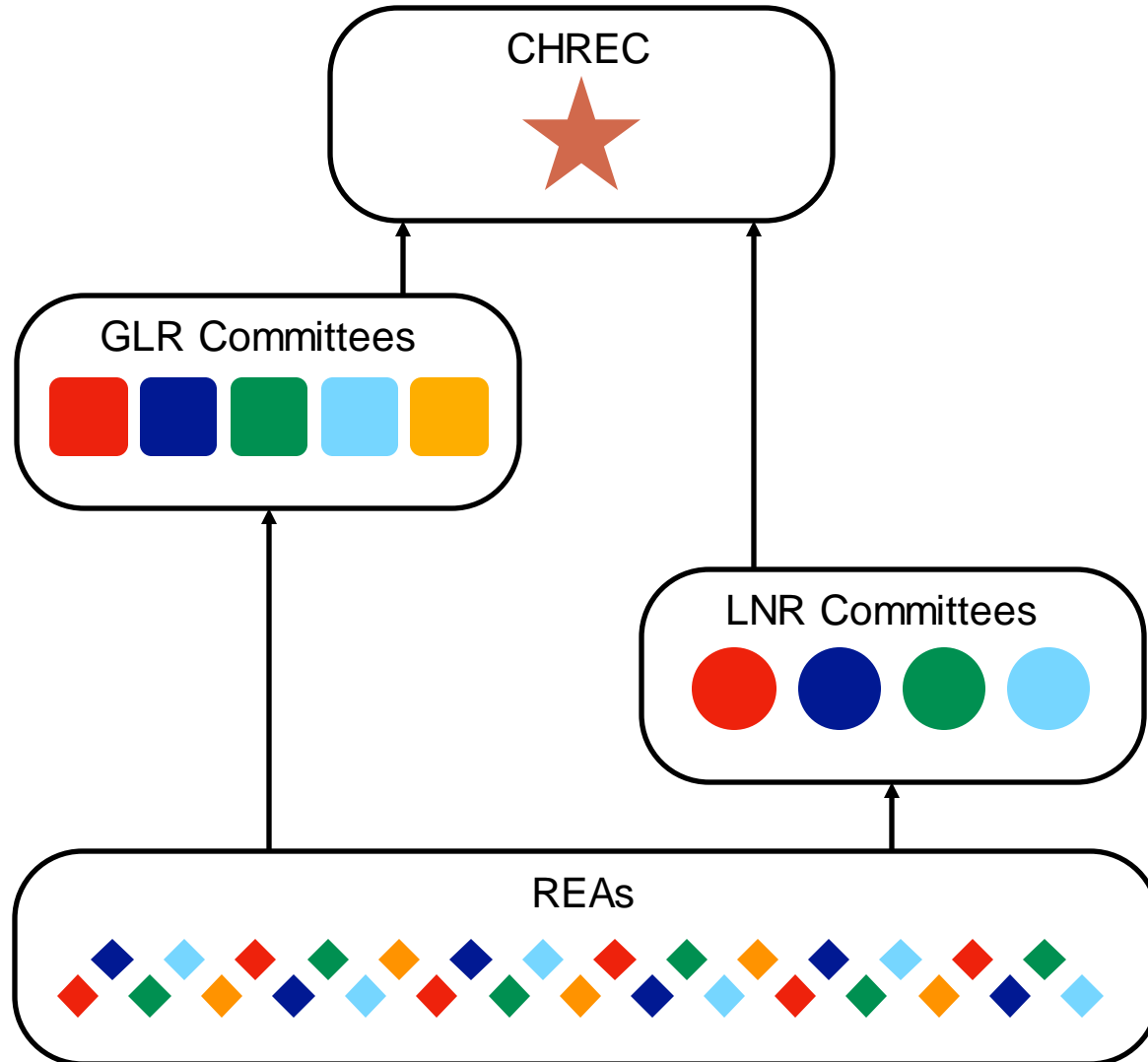
*Melbourne School of Psychological Sciences*



# Introduction

**Human research conducted by students and staff of the University of Melbourne requires ethical approval**

# Ethics review structure



## 1 CHREC

- Responsible for oversight of all matters pertaining to human research
- Policy development and appeals

## 5 GLR Committees in 2 Streams

- Responsible for review and approval of standard research projects
- Broad representative membership

## 16 LNR Committees in 4 Streams

- Responsible for review and approval of low- and negligible-risk projects
- Populated by academics and HDR students

## Research Ethics Advisors

- Responsible for pre-review of all project types
- Academics within Schools and Departments



# Types of application

Amendments

Registrations

Transfers

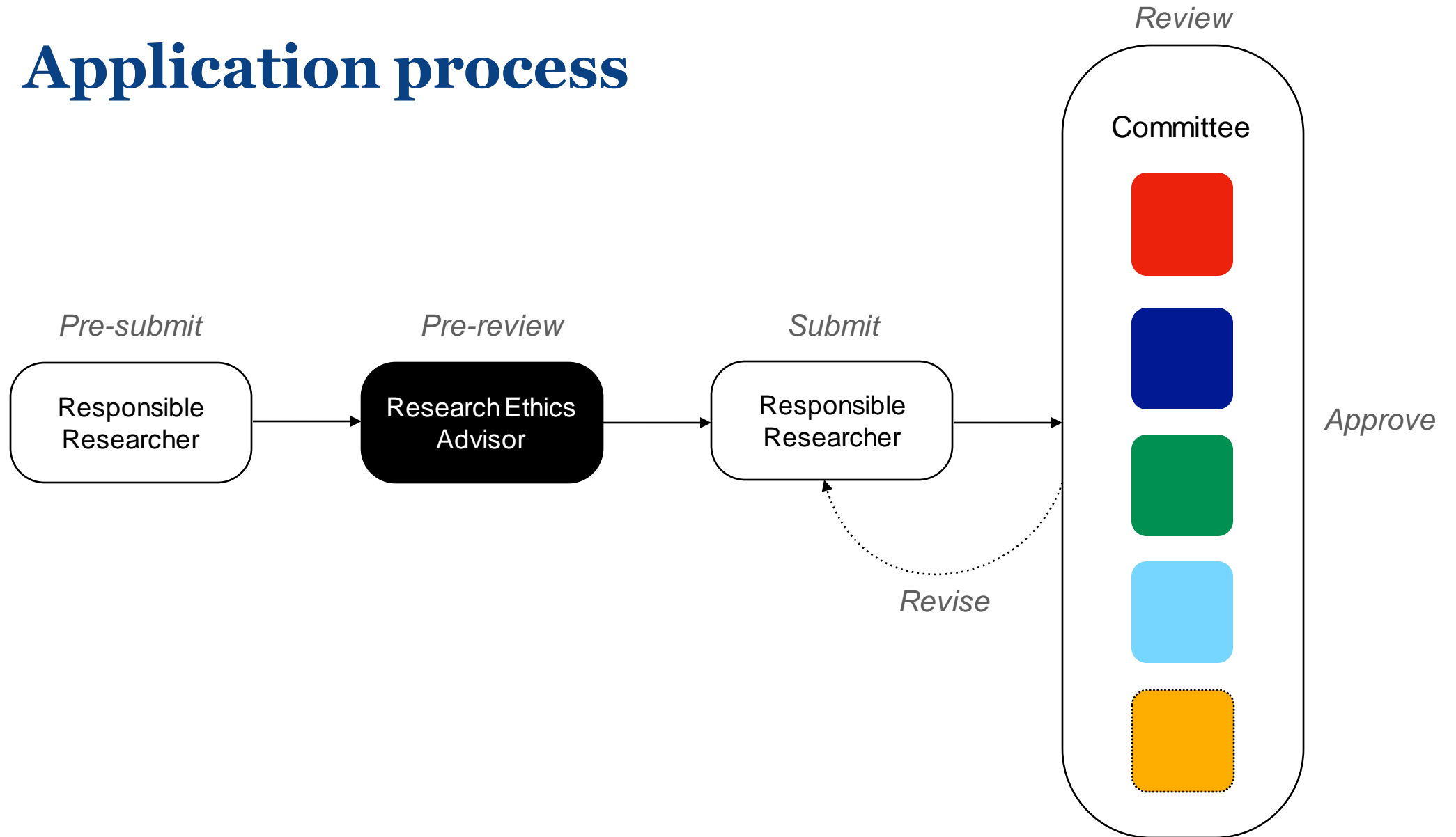
New applications

- Minimal risk
- Standard project
- Project within program

*Working through the first few screens in Infonetica may help you work out what kind of application you will need.*



# Application process





# Application process

1. Discuss the ethical dimensions of your project with your supervisor
2. Create new application in Infonetica ERM
3. Prepare and upload required documents
4. Submit application for pre-review (*new applications only*)
5. Respond to REA feedback (*new applications only*)
6. Submit application for committee review
7. Respond to committee feedback if required
8. Commence research on receipt of approval letter



# More information

## ***First port of call***

- Your supervisor
- Research gateway  
<https://gateway.research.unimelb.edu.au/resources/ethics-and-integrity/human-ethics/apply-for-ethics-approval>

## ***For general matters***

- Office for Research Ethics and Integrity  
<http://www.orei.unimelb.edu.au/>

## ***For technical matters***

- ServiceNow Research Domain Systems Request  
<https://unimelb.service-now.com/research>

## ***For local matters***

- MSPS Research Ethics Website & Advisors  
<https://psychologicalsciences.unimelb.edu.au/research/research-ethics>